



100 Street Place

10150 100 Street Edmonton, AB

Highlights

Builtout Penthouse unit Available

Surrounded by retail on Rice Howard Way

Amenities

Co tenants include Rosewood Foods and The Artworks

Highly walkable area

Immediate Availability

Contact: **Nathan Wanchulak**
Leasing Manager
+1.780.945.4657
nwanchulak@melcor.ca

Shauna Hazlett
Senior Leasing Manager
+1.780.945.2797
SHazlett@melcor.ca

MELCOR
melcor.ca

100 Street Place

10150 100 Street Edmonton, AB



Availabilities

9	5,151 sf	
8	1,254 sf	687 sf
7	801 sf	
6		
5	5,150 sf	
4		2,056 sf
3		
2		1,972 sf
1		

Asking Rent	Market Rent
Additional Rent	Retail \$13.82 Office \$16.91
TI	Suite dependent, contact agent
Amenities	Secure Bike Storage
Available Parking	Adjacent offsite parkade
Availability	Immediate

Available Leased



Property Details



Asking Rent

Market Rent



On-site, professional building management by Melcor REIT

Additional Rent

Retail \$13.82 / sq. ft.

Office \$16.91 / sq. ft.



Walk Score 99: Walker's Paradise
Daily Errands do not require a car

Parking

Adjacent above ground parkade



Transit Score 87: Direct access to LRT and major bus routes

TIA

Suite dependent, contact agent



Bike Score 95: Daily errands can be accomplished on a bike

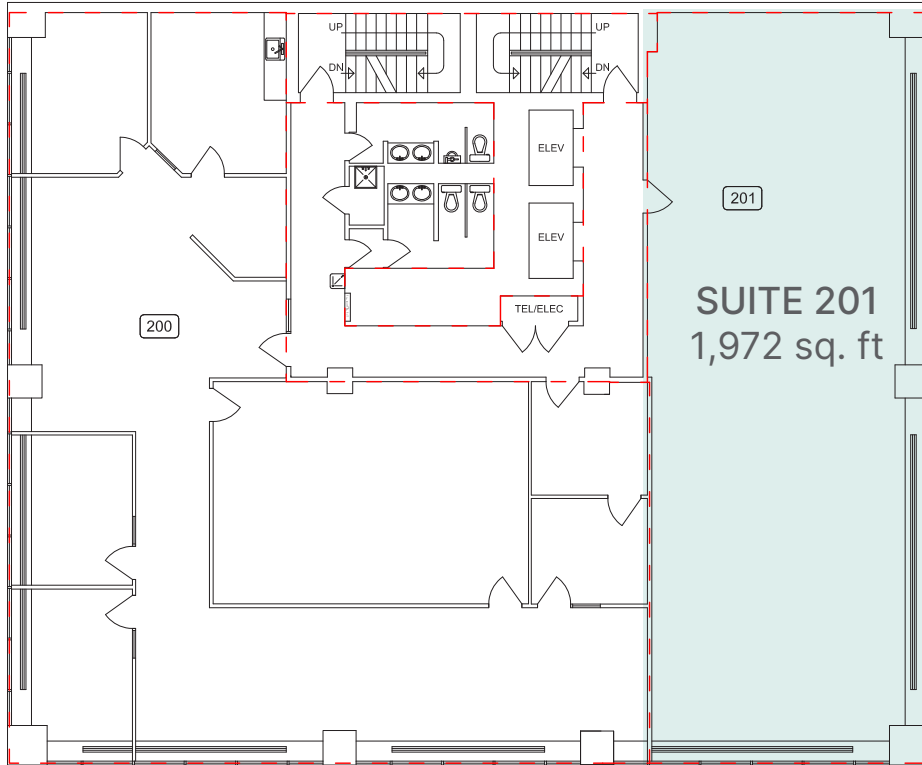
Unit(s)	Area (sq.ft.)	Comments
201	1,972	White box condition
440	2,056	4 private offices, reception area, open work area, boardroom, kitchenette,
500	5,151	Direct elevator access, 2 kitchenettes, boardroom, offices + meeting rooms, open work space area.
710	801	Office + open work space area
870	1,254	Reception, Open work area, 4 office + meeting rooms, move in ready
880	687	Reception, open work area, offices/meeting rooms, move in ready.
900	5,138	Move in ready, open concept work spaces, private offices, multiple meeting rooms, in unit bike storage, in unit lockers.

Second & Fourth Floors

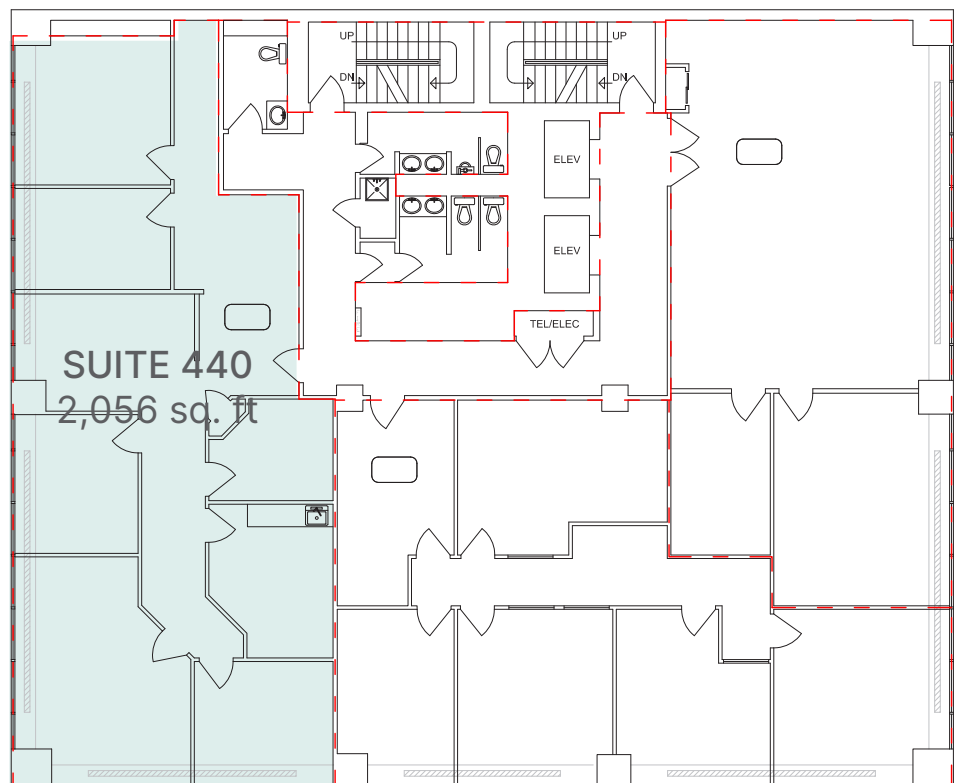
SUITE 201 | 1,972 sq. ft.
SUIT 440 | 2,056 sq. ft.



Second floor

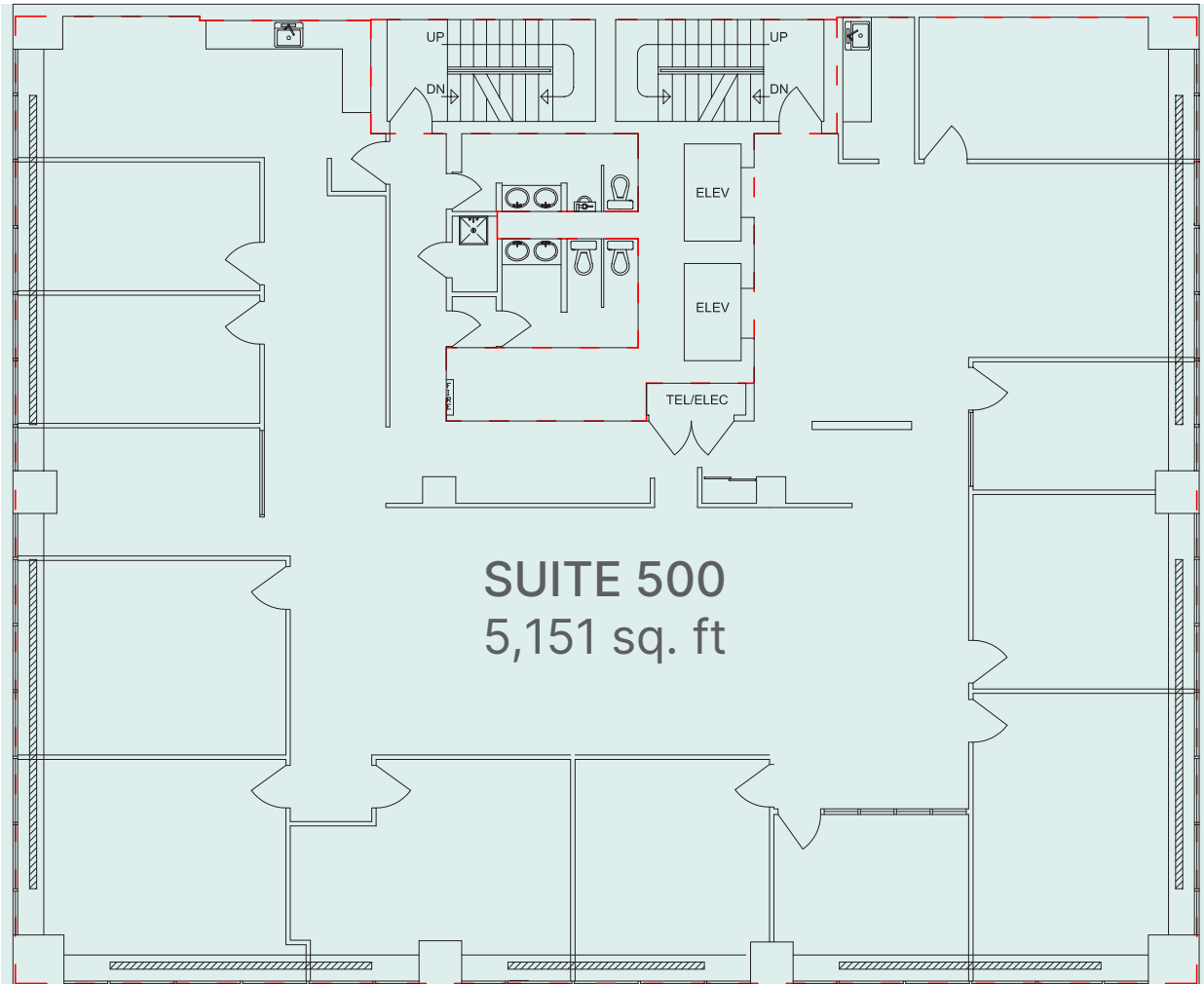


Fourth floor



Fifth Floor

SUITE 500 | 5,151 sq. ft.

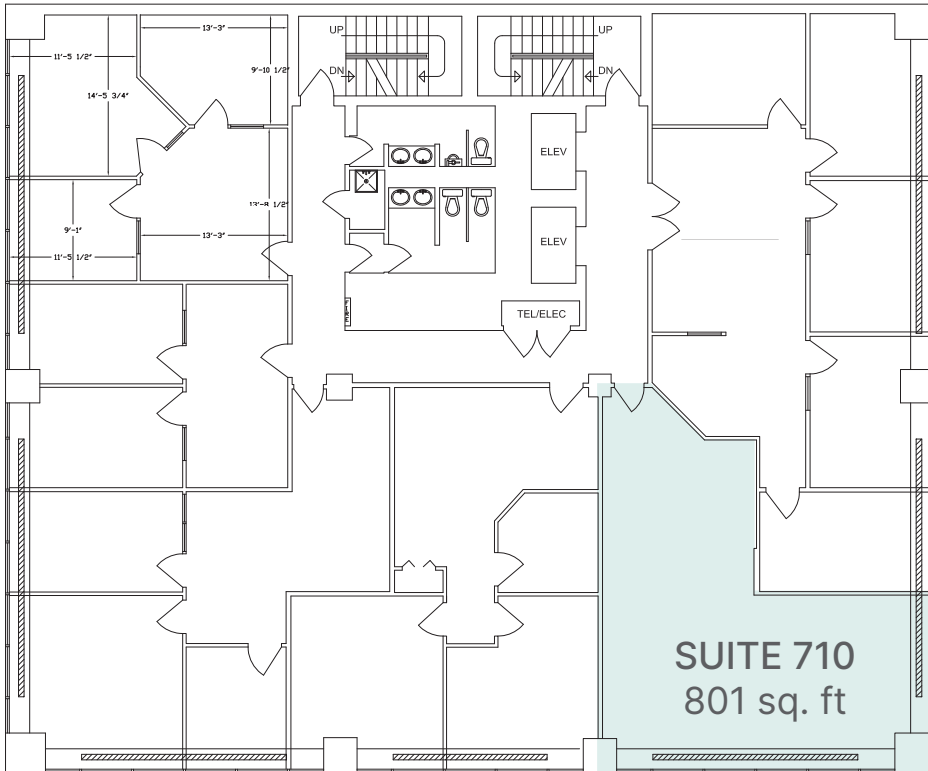


Seventh & Eighth Floor

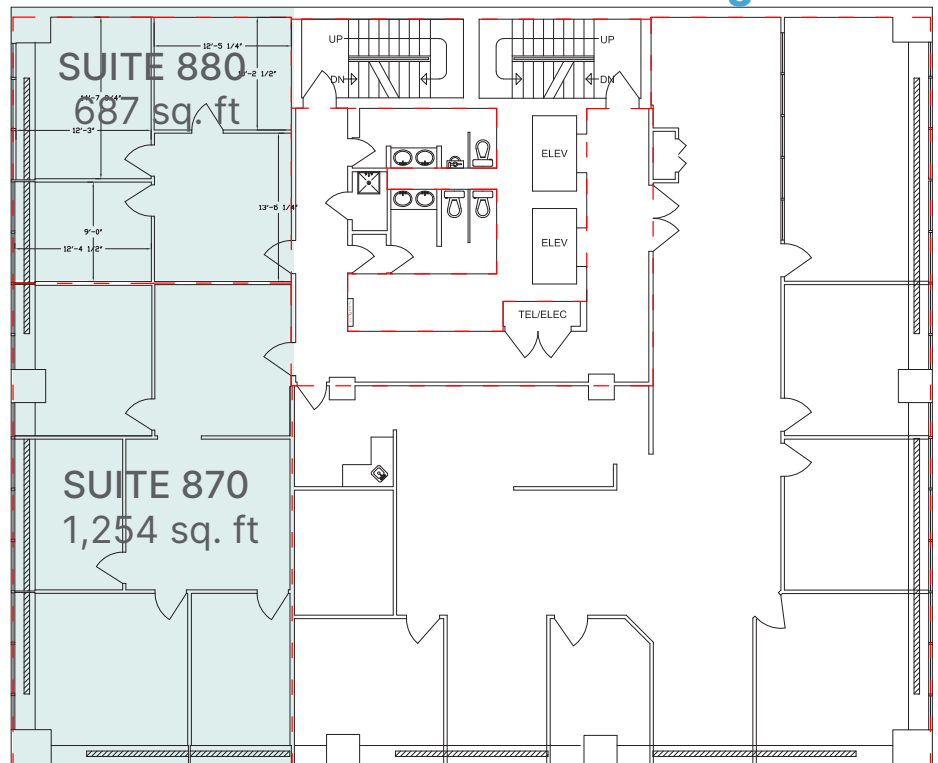
SUITE 710 | 801 sq. ft .
SUITE 870 | 687sq. ft .
SUITE 880 | 1,254 sq. ft .



Seventh floor

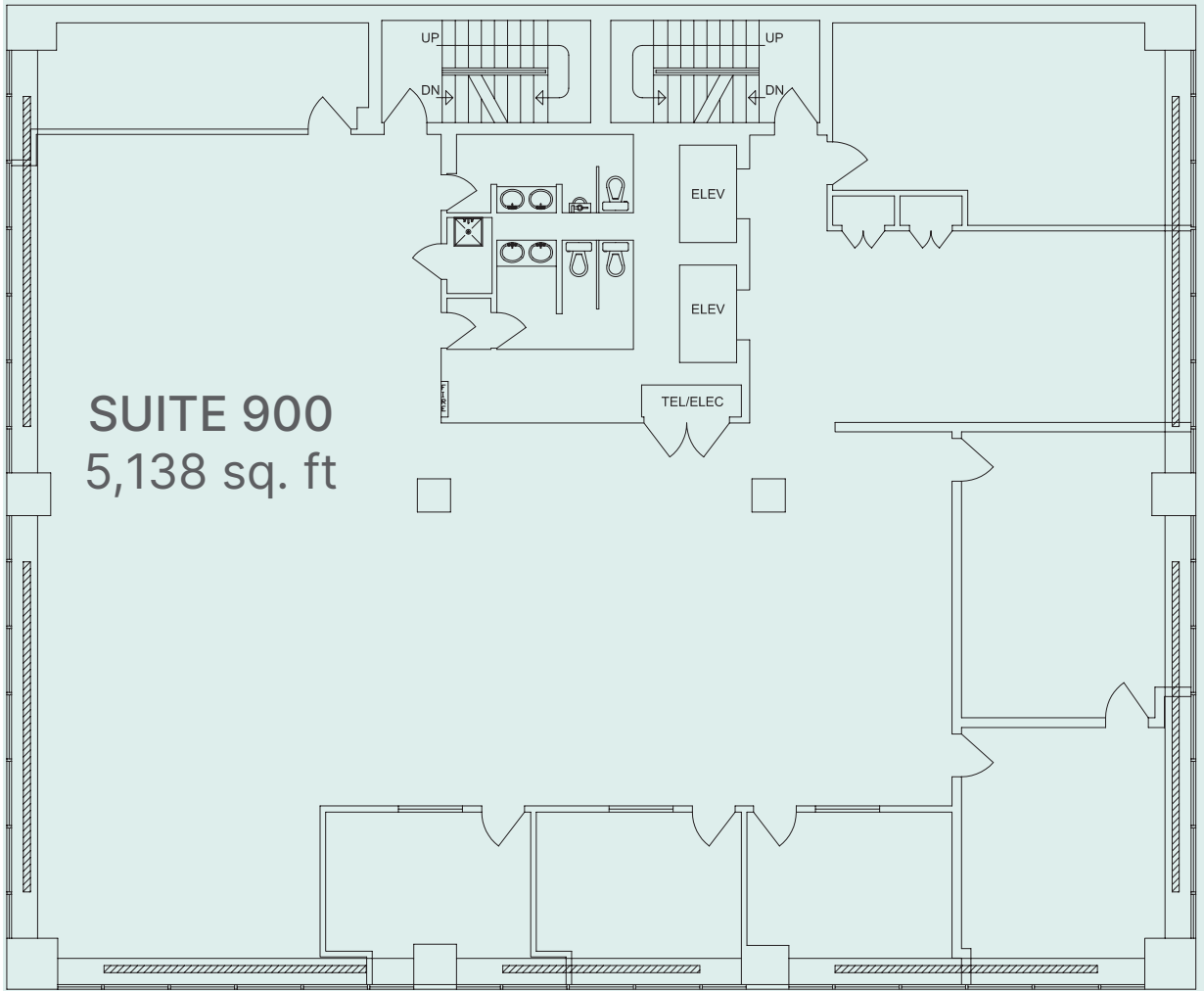


Eighth Floor



Ninth Floor

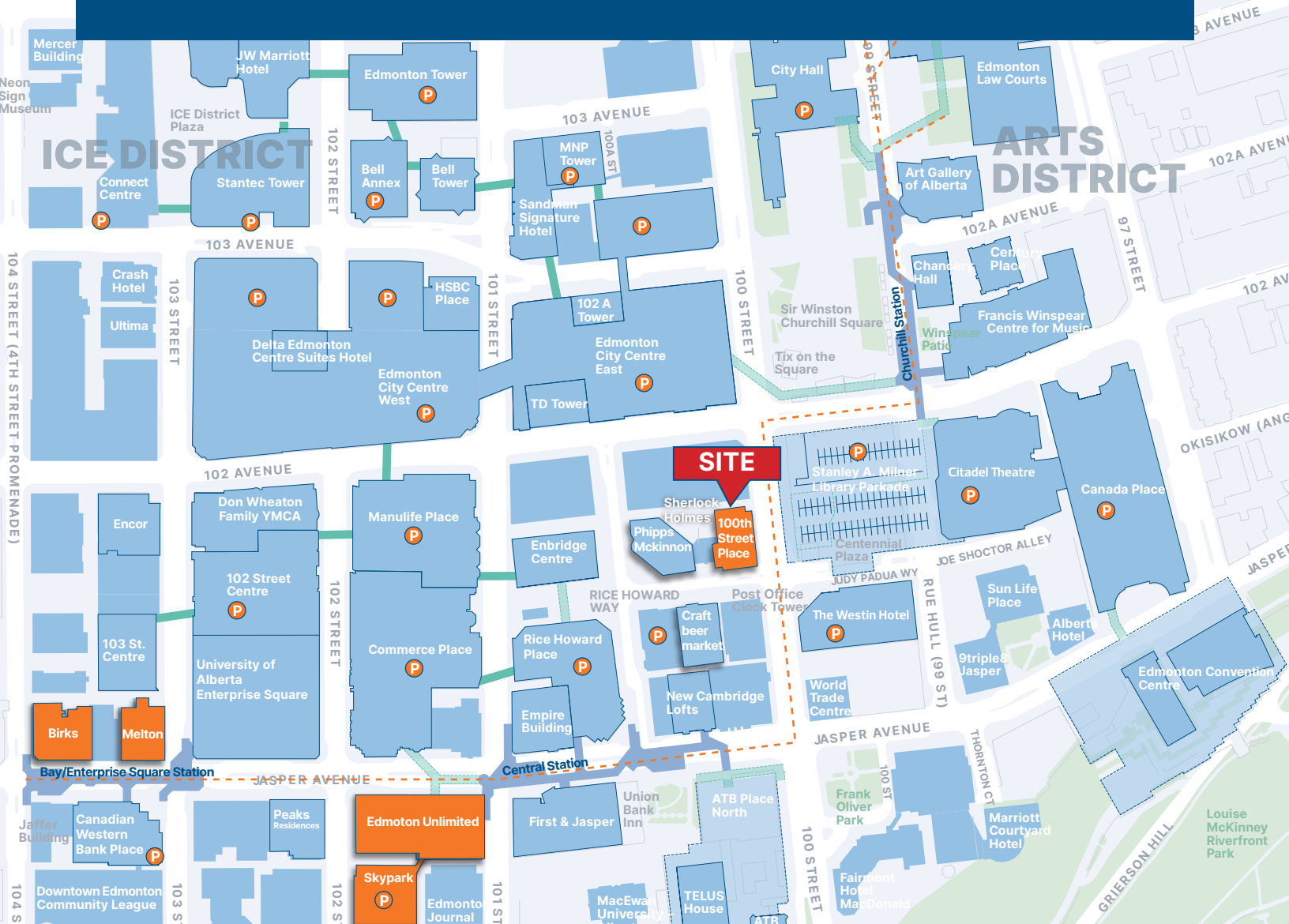
SUITE 900 | 5,138 sq. ft.



100 Street Place

10150 100 Street Edmonton, AB

Office | For Lease



Library Parkade

1 min walk



Rice Howard Parking

2 min walk



City Centre

2 min walk

Contact Us

Nathan Wanchulak

Leasing Manager

+1.780.945.4657

nwanchulak@melcor.ca

Shauna Hazlett

Senior Leasing Manager

+1.780.945.2797

SHazlett@melcor.ca

melcor.ca

MELCOR