



Stanley Buildings

11748 Kingsway Avenue Edmonton, AB

Highlights

Near Kingsway Mall and Transit Centre

Freestanding buildings with dedicated parking

Amenities

Private outdoor amenity area

Adjacent surface parkade

Immediate Availability

Incoming Blatchford Community near by

Contact: **Shauna Hazlett**
Senior Leasing Manager
+1.780.945.2797
SHazlett@melcor.ca

MELCOR
melcor.ca

Stanley Buildings

11748 Kingsway Avenue Edmonton, AB



Availabilities

11748

2		1318 sf
1		

11810

2		
1		

Asking Rent	Market Rent
Additional Rent	11748 - \$17.01 11810 - \$13.60
TI	Suite dependent, contact agent
Amenities	Private outdoor amenity area
Available Parking	Adjacent above ground parkade
Parking Ratio	2 : 1,000
Availability	Immediate

Available Leased



Property Details



Asking Rent

Market Rent

Additional Rent

11748 - \$17.01 / sq. ft.

11810 - \$13.60 / sq. ft.

Parking

Adjacent above ground parkade

TIA

Suite dependent, contact agent



On-site, professional building management by Melcor REIT



Walking score 66: Somewhat Walkable. Some errands can be accomplished on foot



Transit Score 54: Good Transit. Many nearby public transportation options



Biking 44: Somewhat Bikeable. Minimal bike infrastructure

UNIT(S)

AREA (SF)

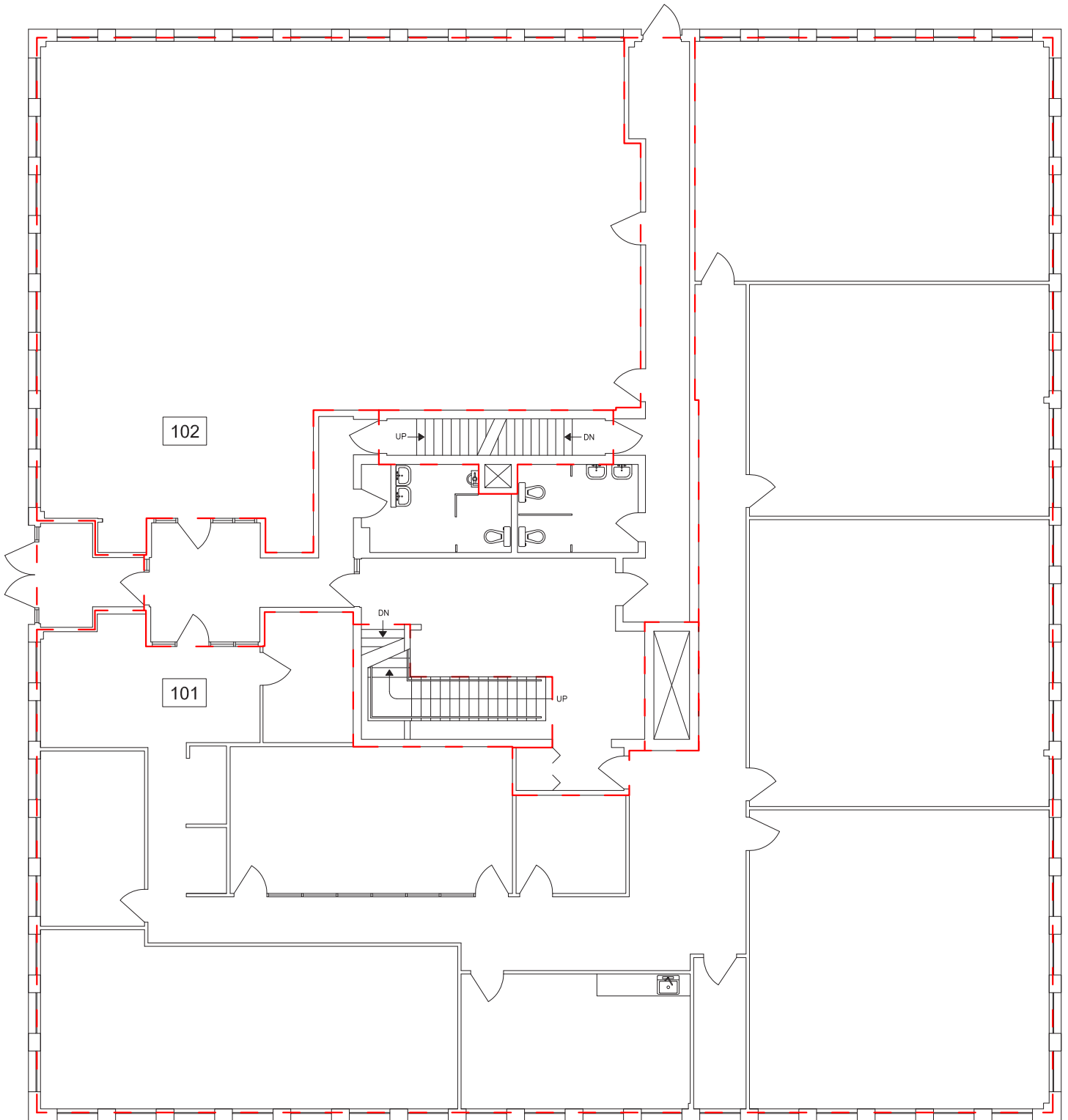
COMMENTS

202

1,318

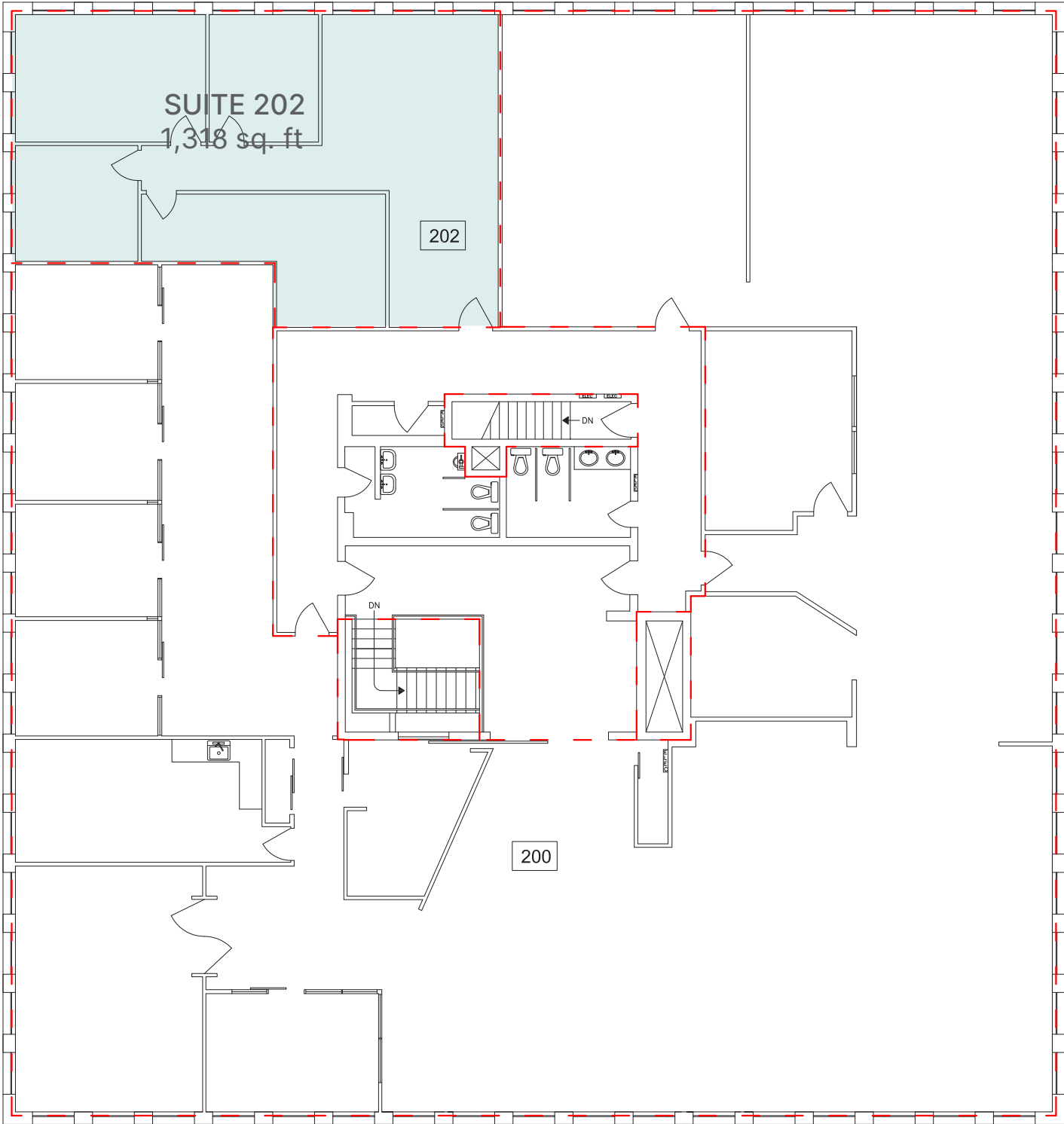
Reception, kitchenette, 3 offices

11748 First Floor



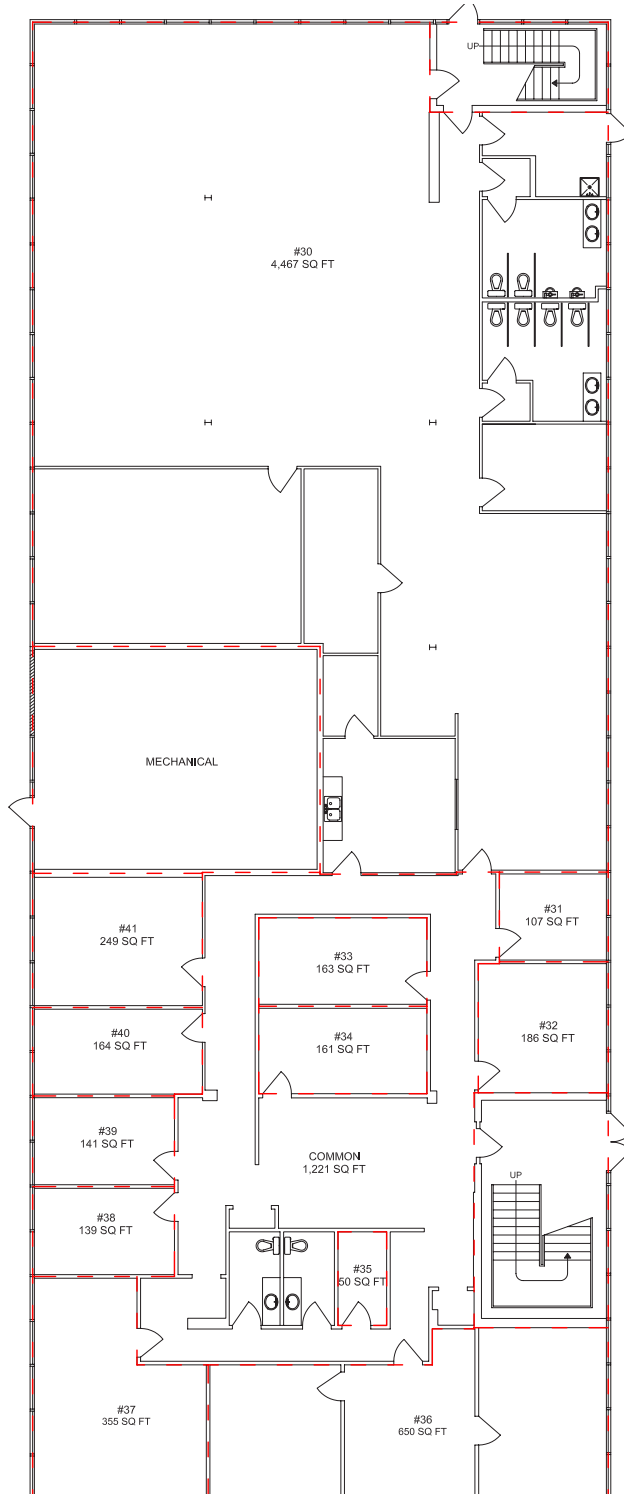
11748 Second Floor

SUITE 202 | 1,318 sq. ft.

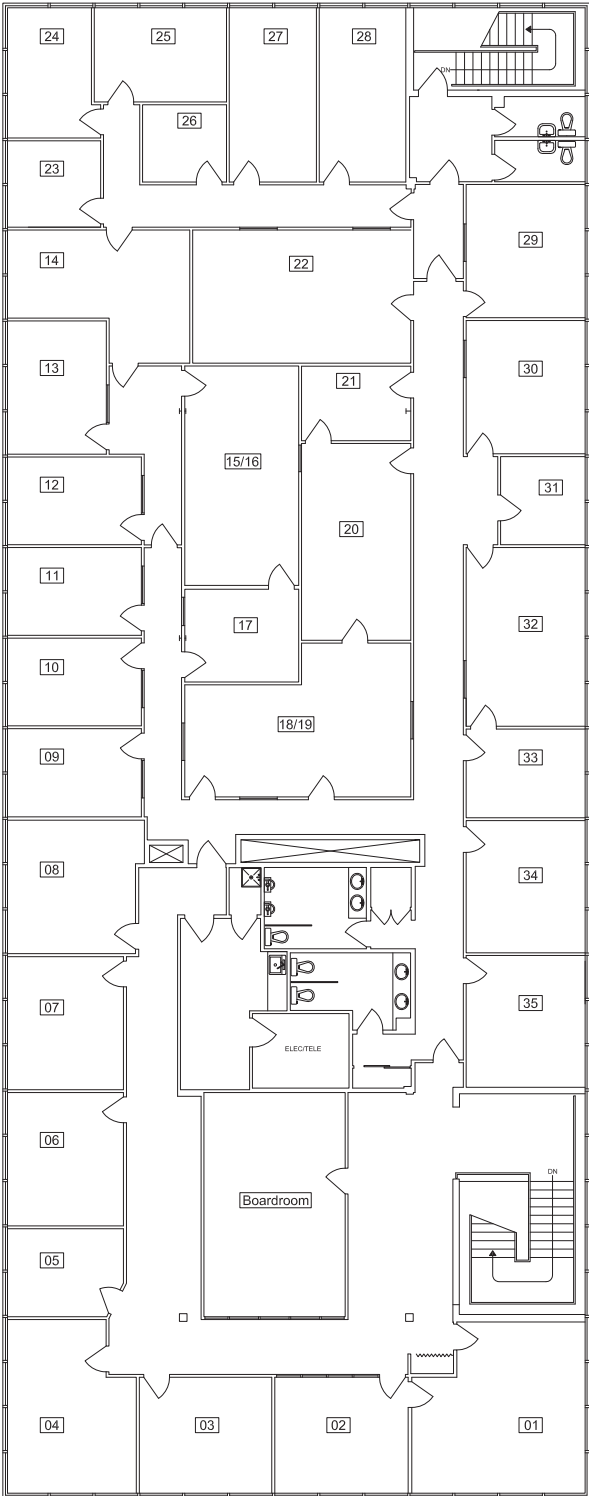


Office | For Lease

11810 First Floor



11810 Second Floor



Stanley Buildings

11748 Kingsway Avenue Edmonton, AB

Office | For Lease



ETS Stops

1 min walk



Kingsway Mall and Transit Centre

20 min walk (Walmart,
Hudsons Bay, Moxies,
McDonald's)



Kingsway Centre

9 min walk (Superstore,
Starbucks, Pho Hoan,
Pasteur)

Contact Us

Shauna Hazlett

Senior Leasing Manager

+1.780.945.2797

SHazlett@melcor.ca

melcor.ca

MELCOR